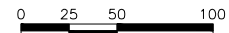
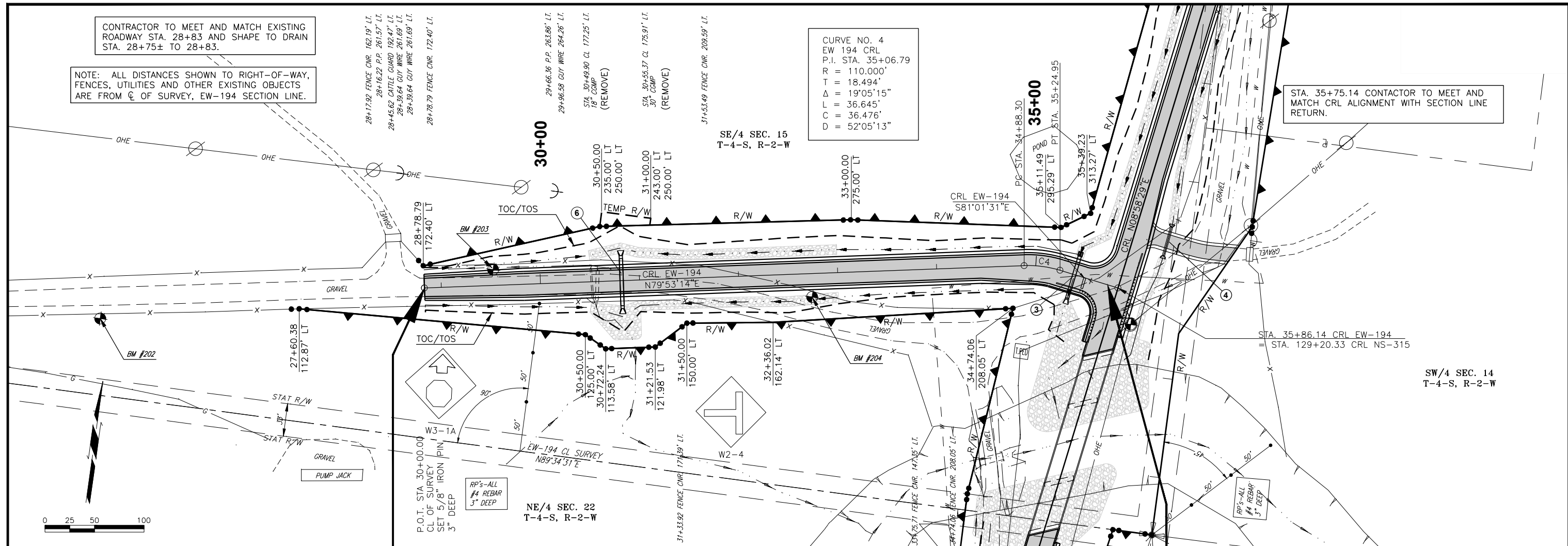


CONTRACTOR TO MEET AND MATCH EXISTING ROADWAY STA. 28+83 AND SHAPE TO DRAIN STA. 28+75± TO 28+83.

NOTE: ALL DISTANCES SHOWN TO RIGHT-OF-WAY, FENCES, UTILITIES AND OTHER EXISTING OBJECTS ARE FROM CL OF SURVEY, EW-194 SECTION LINE.

CURVE NO. 4  
 EW 194 CRL  
 P.I. STA. 35+06.79  
 R = 110.000'  
 T = 18.494'  
 Δ = 19°05'15"  
 L = 36.645'  
 C = 36.476'  
 D = 52°05'13"



BM #202 STA. 25+62.77 76.73' LT.  
 SET 5/8" IRON PIN ELEV. 837.04

STA. 28+83.00  
 BEGIN EW-194  
 150.28' LT. CL SURVEY

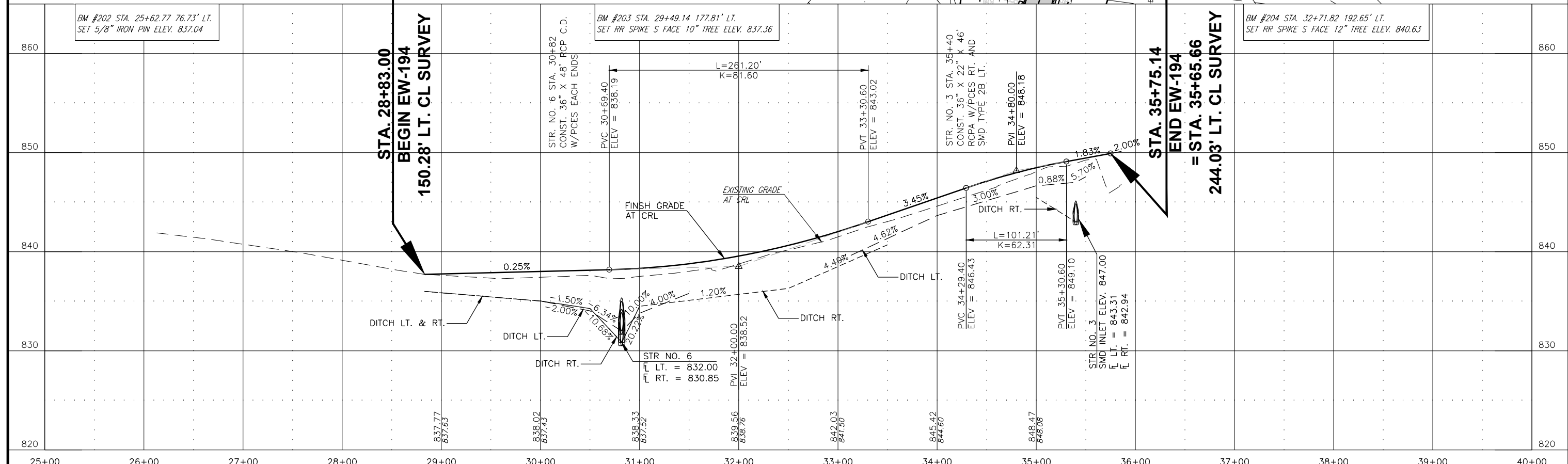
STR. NO. 6 STA. 30+82  
 CONST. 36" X 48" RCP C.D.  
 W/PCES EACH END

BM #203 STA. 29+49.14 177.81' LT.  
 SET RR SPIKE S FACE 10" TREE ELEV. 837.36

STR. NO. 3 STA. 35+40  
 CONST. 36" X 22" X 46"  
 RCPA W/PCES RT. AND  
 SMD TYPE 2B LT.

STA. 35+75.14  
 END EW-194  
 = STA. 35+65.66  
 244.03' LT. CL SURVEY

BM #204 STA. 32+71.82 192.65' LT.  
 SET RR SPIKE S FACE 12" TREE ELEV. 840.63



25+00 26+00 27+00 28+00 29+00 30+00 31+00 32+00 33+00 34+00 35+00 36+00 37+00 38+00 39+00 40+00